

# Pfizer Patient Access Coordinators are here to help you get your prescribed Pfizer Dermatology medication

**CIBINQO**<sup>®</sup>  
(abrocitinib) tablets

**Litfulo**<sup>®</sup>  
(ritlecitinib)

A Patient Access Coordinator (PAC) is a Pfizer professional who can explain how your insurance works and how you can get your prescribed Pfizer Dermatology medication.



## Your PAC can:



**Connect** you to resources and affordability options you may be eligible for



**Guide** you through copay enrollment



**Help** you understand your insurance benefits and coverage



**Provide** live status updates over the phone



**Give** you an estimated out-of-pocket cost, if available



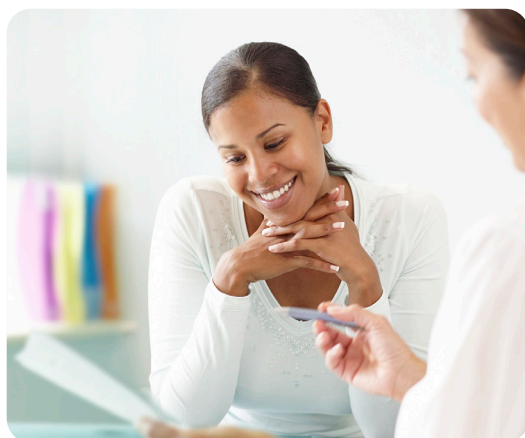
**Answer** your questions throughout the prescription process

Please see full [Prescribing Information](#), including **BOXED WARNING**, and [Medication Guide](#) for **CIBINQO**<sup>®</sup>, and full [Prescribing Information](#), including **BOXED WARNING**, and [Medication Guide](#) for **LITFULO**<sup>®</sup>.

# Support for Your Treatment Journey Starts Here

If you're prescribed **CIBINQO®** (abrocitinib) or **LITFULO®** (ritlecitinib), a dedicated **PAC** can support you through your treatment journey

If you're enrolled in **Pfizer Dermatology Patient Access™** (PDPA), you will automatically receive PAC support.



**Not enrolled in Pfizer Dermatology Patient Access™? No problem.**

You can opt in for PAC support directly by visiting [PACpdpa.com](https://PACpdpa.com)



Please see full [Prescribing Information](#), including **BOXED WARNING**, and [Medication Guide](#) for **CIBINQO®**, and full [Prescribing Information](#), including **BOXED WARNING**, and [Medication Guide](#) for **LITFULO®**.

